



vantify
CONSULTANCY

Environmental Courses

Training Courses

RESOURCE BROCHURE



0203 337 3575



enquiries@vantify.com



vantify.com


Asbestos Awareness

Using case studies and incident data from similar industries, this course covers changes in relevant legislation and HSE guidance, as well as practical actions to ensure asbestos safety.

This course teaches:

- Asbestos use, locations and impacts on health
- Asbestos law in relation to surveys and the appointment of surveyors, management plans, asbestos registers and remedial actions
- The principles of asbestos identification
- Emergency procedures where asbestos is exposed or damaged
- Processes for instructing maintenance contractors and employees

Designed for workers who are responsible for sites in areas such as purchasing, refurbishment, contractor instruction and day-to-day management, this course counts towards CPD.

 0.5 days

 In person or virtual




Legionella Awareness - Management and Control of Building Hot and Cold-Water Systems

This practical course calls on water monitoring records and case studies to explain the importance of effective record keeping, water logs and how to audit records.

This course teaches:

- What is legionella exactly: Take a look at what the legionella bacteria is and how it can enter a water system. Also examine the illnesses that this bacteria may cause and become aware of the symptoms that people may experience.
- Identify legionella risks and understand its control: Consider the risk factors for growing the legionella bacteria and learn how these may be controlled by following some basic principles.
- Maintenance Tasks: Understand the basic preventative steps that can be followed and the requirements for performing routine maintenance tests and checks.
- Tools that may help: Listen to the latest advice and guidance from an industry specialist on specific equipment that can help you prevent and control the bacteria and limit the risks to health.
- Record keeping: Identify what records and documents need to be kept on site and understand the management systems that are available to help you.

Designed for team members with responsibilities for legionella control in relation to water systems, this course counts towards CPD.

 **1 day**

 **In person or virtual**




Legionella Awareness - Management and Control of Cooling Towers and Other High-Risk Systems

A practical course calling on case studies and water monitoring records, delegates are taught about the importance of effective record keeping, water logs and how to audit records. In particular, how often various checks should be carried out.

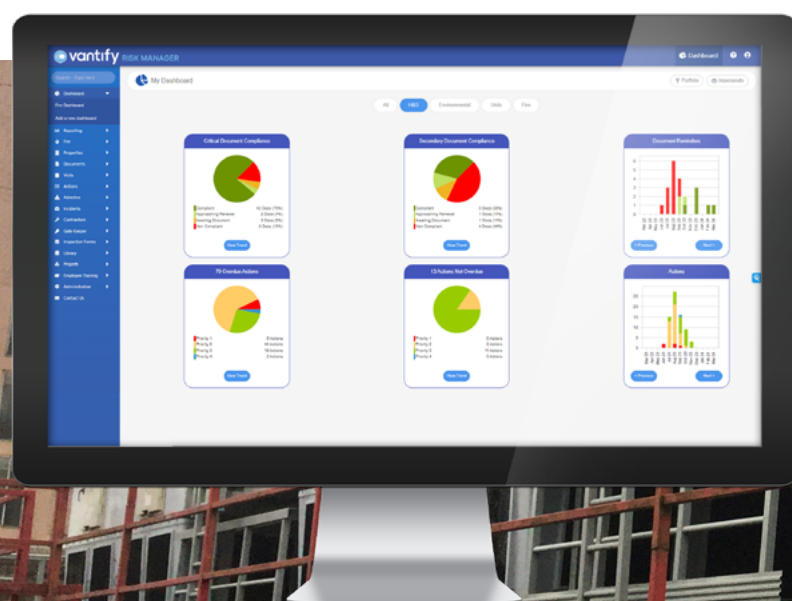
This course teaches:

- The history, growth requirement and health effects of legionella and associated organisms.
- Legislation requirements and L8. (as amended)
- The specific roles and responsibilities of those involved in legionella control, for example property managers, maintenance contractors, water treatment contractors, external assessors.
- The principles of legionella prevention and minimisation.
- Role of the control scheme in relation to cooling towers.

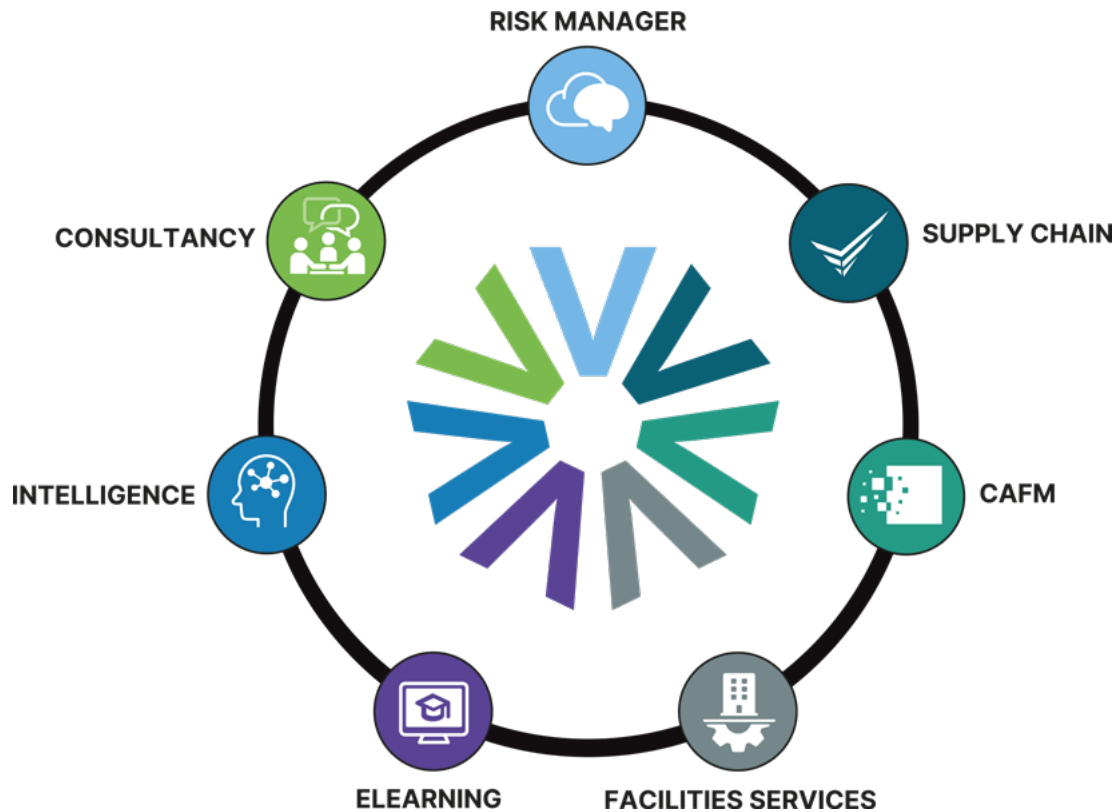
Designed for team members with responsibilities for legionella control in relation to water systems, this course counts towards CPD.

 **0.5 days**

 **In person or virtual**



The Vantify Ecosystem



Better together. Only with Vantify.



0203 337 3575

enquiries@vantify.com

www.vantify.com

Registered Office, 20 Grosvenor Place, London, England SW1X 7HN

William Martin, Meridian, Prosure360, and Elogs have joined forces to create Vantify® - our unified ecosystem that provides a single vantage point for compliance and risk management.